



Manual

Introduction

BMW key programming device and software are for vehicles equipped with EWS module , coverage 1994-2004 that have EWS module(including EWS2, EWS3 and EWS3+, Rover75, MINI, RangeRover, FreeLander, Discovery).You can programm new keys when all keys are lost or stolen by this device. Of cause be able to add new keys.

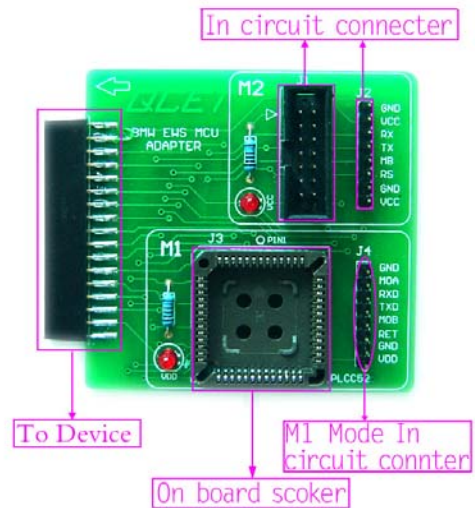
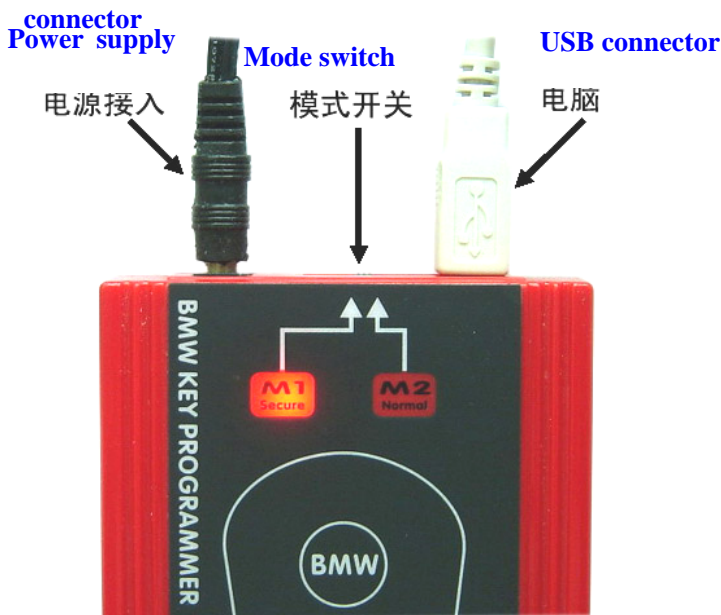
<http://www.cnreliable.com>

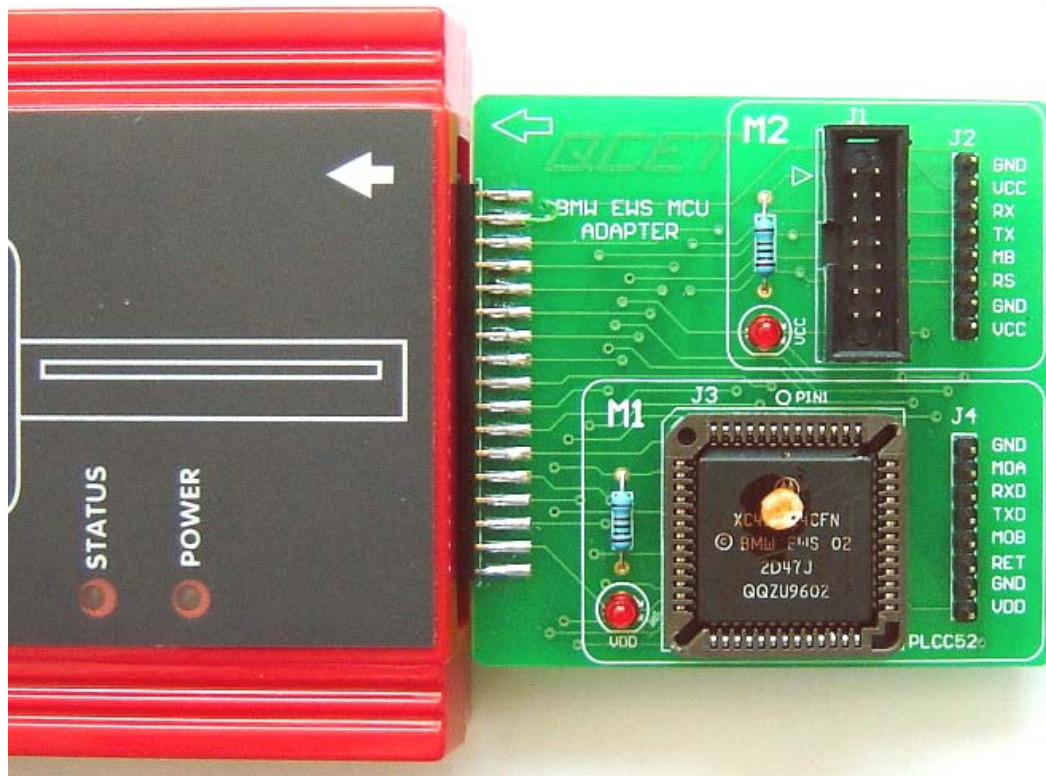
Support

EWS 2,EWS 3,EWS 3+:Include 0D46J, 1D47J, 2D47J, **2D47J(with secured)** Safe for reading data from EWS (with secured).

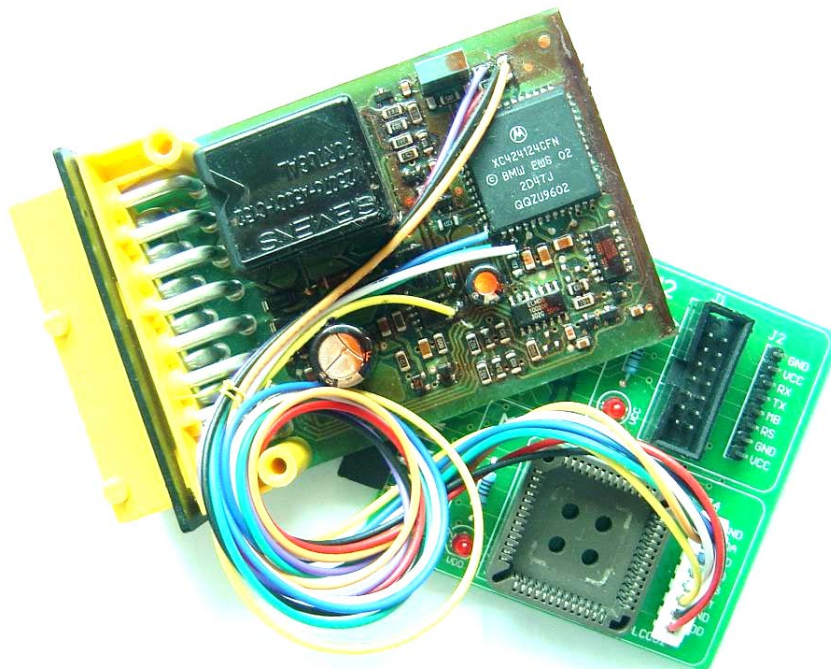
Part One: Install hardware

Connect with DC-12V power supply, turn the Mode switch to M1, the indicator light is on, connect the device and PC by USB line. As below picture:





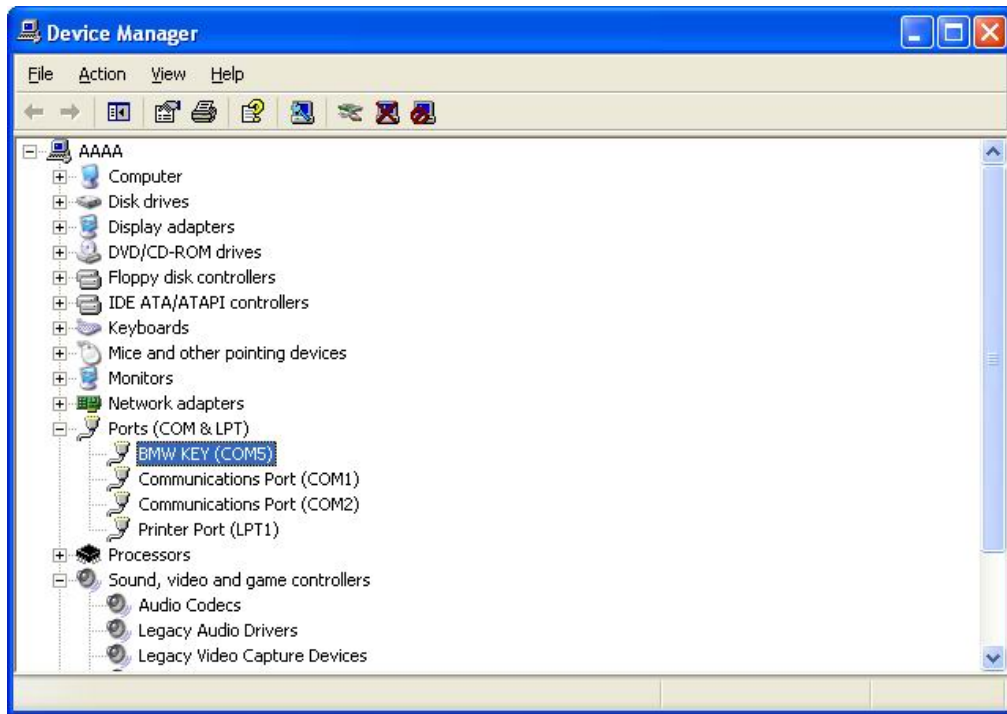
On board connect. For EWS2 (MCU Masker 1D47J) , EWS3 (MCU Masker 2D47J) .



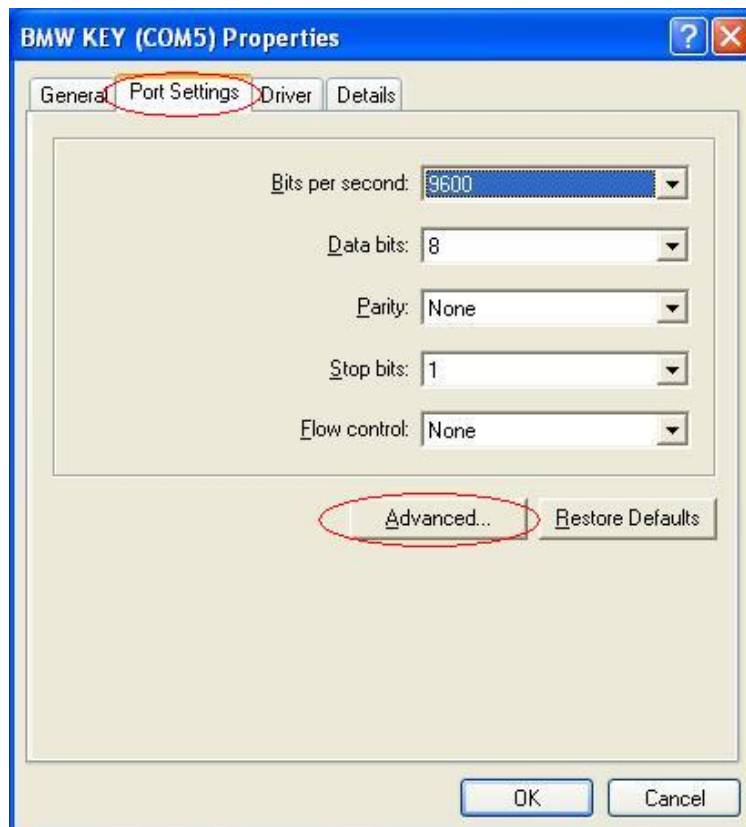
In circuit connect. For EWS2 (MCU Masker 2D47J).

If the Serial Port Number is greater than COM4, you must choose the port in COM1-COM4.

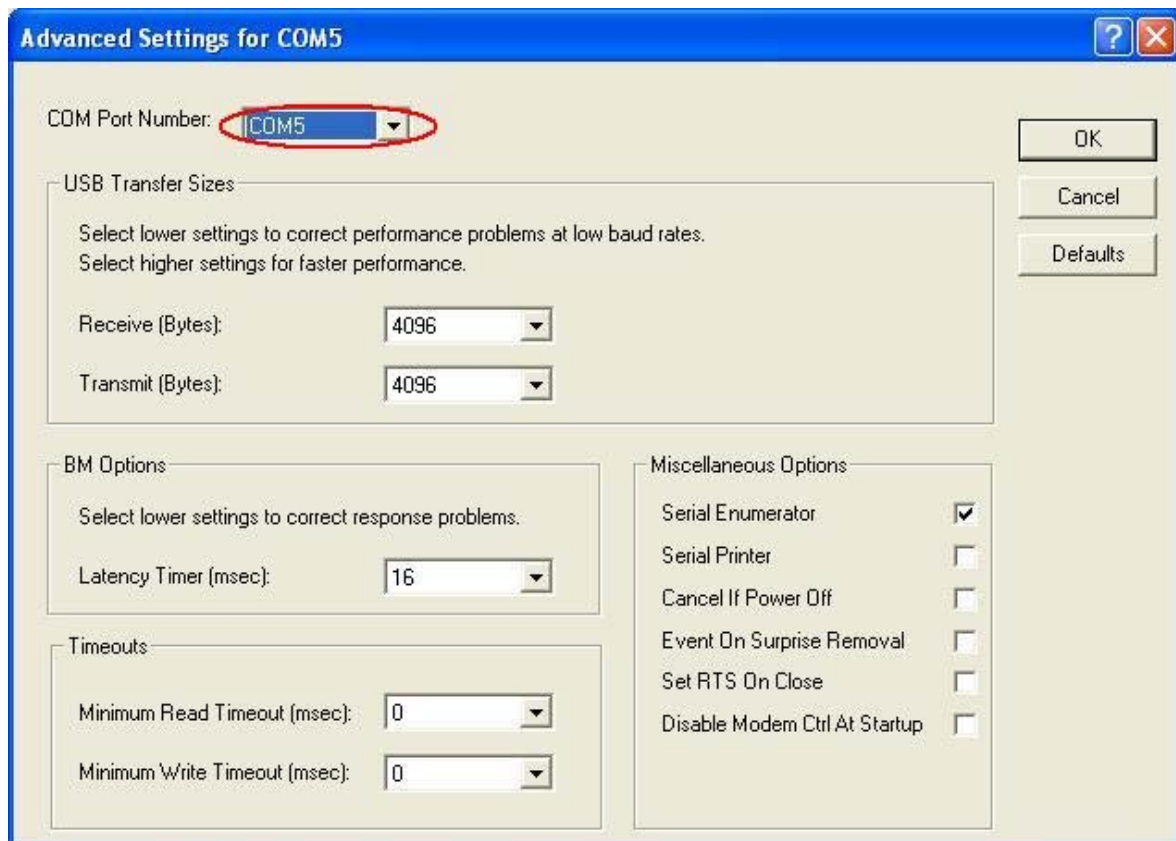
Go to [Device Manager], it shows as below:



Choose [BMW KEY (COM5)], right click choose Properties, it shows as below:



Go to [**Port Settings**] panel, then click [Advanced...], it shows as below: Choose one COM Port Number (COM1-COM4), and then click OK to finish the operation.

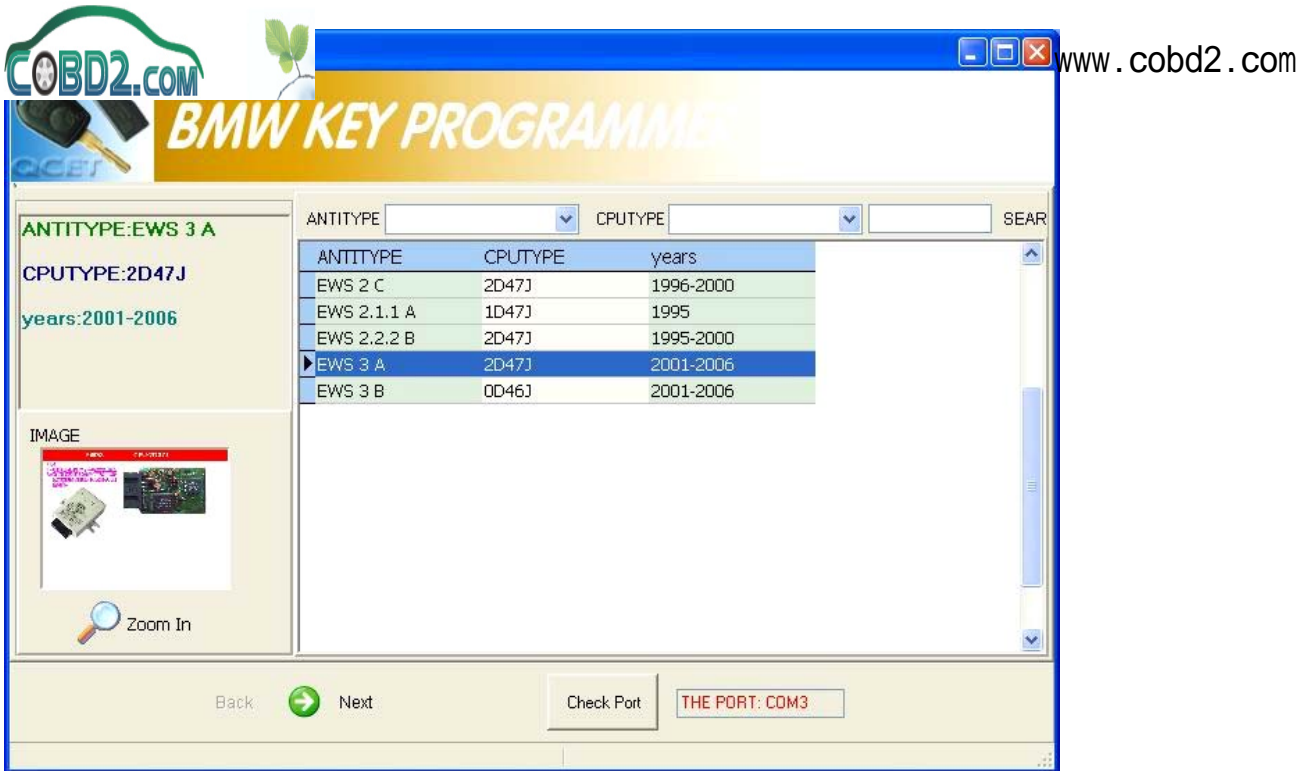


Part Three: Operations

Key Programmer principle: Use the device to read the data of EWS (anti-thief control box), then write the data into a new key or key-chip. Please note, a key or key-chip can be written just once, can not be rewritten. That means the old key cannot be programmed again. The key or key-chip which you want to be programmed must be new.

1. M1 (secure) mode

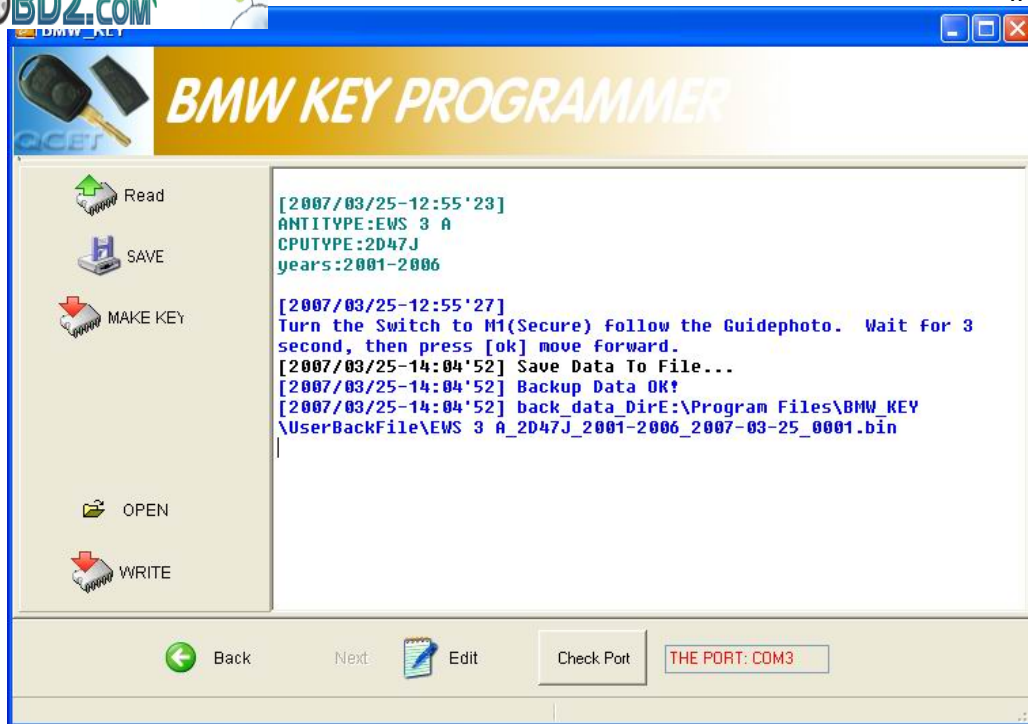
Take the “EWS 3 A ” of mask 2D47J as an example. Select this type then click [**Zoom in**], follow the related operations, click [**Next**]. As below shows:



Software will remind you switch to M1 mode, the red indicator light should light now, then click **[OK]** turn into following screen:



Click **[Read]**, then SAVE data, please mark down the save path, usually the default save path is **C:\Program Files\BMW_KEY\UserBackfile**. Please also memorize the file name, such as **[EWS 3 A_2D47J_2001-2006_2007-03-23_0006.BIN]**. Save the data then click **[MAKE KEY]**, now it will display as below. In addition, **[Open]** and **[Write]** button is used for writing or other purpose by well-informed user. So these two buttons are out of the scope of regular operation.



Operation steps: Switch to M2 mode, the M2 indicator light should light.

First step: Choose the right COM port (COM1-COM4).

Second step: Input the key serial number (0~9), recommend input upward of number 4.

Third step: Open the Key matching file. Find the file on original save path, usually on path [C:\Program Files\ BMW_KEY\UserBackFile](C:\Program Files\BMW_KEY\UserBackFile). Click **[Open]**.

Forth step: Put the new key or key-chip on the inductive area properly, then click **[Insert and program Keys]**.

